



J-1939 Hourmeter with Snap-In case



SAE J1939

Designed to SAE specifications. The Faria Beede Snap-In instruments provide a Heavy Duty instrument in a easy to install push-in case manufactured in the USA.

No back clamp, washers, nuts or tools are required to install the gauge into your panel.

With its patented mounting design the Snap-In J-1939 Hourmeter is designed to install easily and reduce costs. Simply push through the mounting hole. The case springs out to hold your gauge in place.

Features and Benefits

- Custom icon configurations available
- SAE J-1939 CAN protocol support
- Nylon cases for corrosion resistance and long life
- No hassle mounting - reduces installation time

Faria Beede Instruments, Inc.
P. O. Box 983
Uncasville, CT 06382
860.848.9271
Fax: 860.848.2704



Made in the USA

fm-001-0120 rev C 04/2017

www.FariaBeede.com

Specifications

Environmental Specifications

Shock (Non-operating):
50 +/- 2 G and a half sine duration of 11
+/- 2ms. per MIL-STD-202, Method 213

Vibration (Non-operating):
4 G peak, 10 to 200Hz
SAE J1455 Appendix A

Temperature:
Operating: -40°C to 85°C
Storage: -40°C to 85°C 50% RH

Humidity:
95% relative humidity @110°F (43°C) non-condensing

Salt Spray:
Front is Corrosion resistant per ASTM B117-73

Electrical Specifications

Reverse Polarity Protection:
Standard entire system

Load Dump:
Meets SAE J1113, 3 positive 80V transients
one minute intervals

Operating Voltage:
18-32 VDC standard

Over Voltage:
Withstands 18V continuously for one hour

Output Signal Switching:
150 mA Max.

LCD:
Transflective FSTN dot matrix
positive image mode standard
6:00 O'Clock viewing angle
LED illuminated. Color, white

Mechanical

Bezel Material:
Stainless steel or aluminum
Finish, customer specified

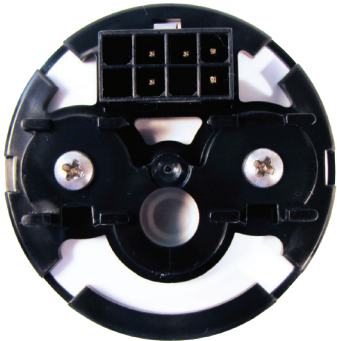
Case:
White thermoplastic copolymer

Dial:
Textured finish polymer
Opaque characters & background

Sealing:
IP 67 compliant

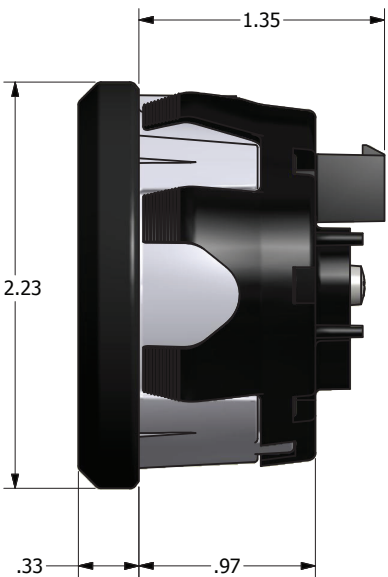
Wiring Connections

Molex Connector	
Pin Number	Connection Name
1	Ground
2	N/C
3	12/24v Ignition
4	N/C
5	J1939 (Shield)
6	J1939 (+) CAN - H
7	J1939 (-) CAN - L
8	N/C

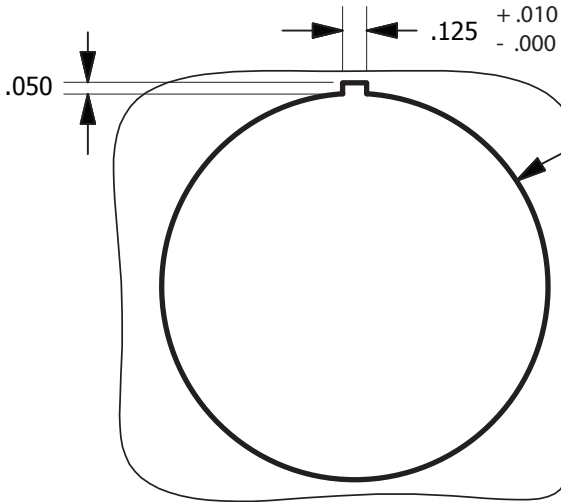


8	7	6	5
4	3	2	1

Product Outline Drawing



Patented Design



Recommended Mounting Hole
 $\varnothing 2.005 \pm .005$
Panel Thickness - .080 to .100

$\varnothing 2.032 \pm .010$
Panel Thickness - .125 to .187