



Aftermarket Catalog - 2020

We Have Moved

75 North Frontage Road, Suite 106, North Stonington, CT 06359



Rugged • Reliable • Innovative

Faria Beede Instruments, Inc. has been manufacturing gauges and instruments in Connecticut for more than 60 years. The company offers analog and digital engine monitoring and telematics solutions for a wide range of global marine, military, industrial and performance industries.

With the Indiana facilities we have doubled our manufacturing capabilities and improved our state of the art electronic board building capabilities, this change makes Faria Beede digital instruments even more reliable than ever before.

One of the few remaining vertically integrated U.S. manufacturers of SAE J1939 instrumentation, Faria Beede provides some of the best turnaround times and responsive support in the industry. This is only possible by having total control of all aspects of design, engineering and manufacturing.

We have completed our move to North Stonington, CT. This new building offers better control of our manufacturing processes the 200 year old building we were in could not. We are all excited for this move and look forward to the changes it will bring.

Whether your needs are simple or for more advanced computerized engines, Faria Beede has the instrumentation solution that is right for you.



Instruments for

Automotive
Commercial
Industrial
Performance
Recreational
Marine
Military

www.FariaBeede.com



Made in the USA

Featured



Boxed Sets
(page 3)



GPS Speedometer
(page 4)



Depth Sounders
(page 5)

Classic Styling



Chesapeake Black SS
(page 7)



Chesapeake White SS
(page 8)



Coral
(page 9)



Dress White
(page 10)



Euro
(page 11)



Euro White
(page 12)



Kronos
(page 13)



Professional Red
(page 13)

New



Platinum
(Fog Resistant Lens)
(page 14)



Spun Silver
(page 14)

Accessories

- Transducers and Senders (page 16)
- Accessories (page 17)
- Specifications (page 18)



Packaged and ready for the display counter.

These Boxed Sets offer a complete set of gauges ready to install.

Available in Chesapeake White Stainless Steel, Chesapeake Black Stainless Steel, Euro, Euro White, Dress White, Platinum (Fog Resistant Lens), Spun Silver and Kronos styles.

The Boxed Sets offer a complete set of gauges ready to install.

Standard Boxed Sets

Featured



| Style | Factory | Description | |
|---------------------|---------|--------------|---------|
| Euro | KT9799 | Inboard Set | 6 gauge |
| Euro | KT9796 | Outboard Set | 4 gauge |
| Euro White | KT9798 | Inboard Set | 6 gauge |
| Euro White | KT9795 | Outboard Set | 4 gauge |
| Dress White | KT9797 | Inboard Set | 6 gauge |
| Dress White | KT9794 | Outboard Set | 4 gauge |
| Chesapeake SS White | KTF001 | Inboard Set | 6 gauge |
| Chesapeake SS White | KTF002 | Outboard Set | 4 gauge |
| Chesapeake SS Black | KTF003 | Inboard Set | 6 gauge |
| Chesapeake SS Black | KTF004 | Outboard Set | 4 gauge |
| Platinum | KTF0186 | Inboard Set | 6 gauge |
| Platinum | KTF0185 | Outboard Set | 4 gauge |
| Kronos | KTF024 | Inboard Set | 6 gauge |
| Spun Silver | KTF0184 | Inboard Set | 6 gauge |

Boxed Sets with GPS Speedometers

| | | | |
|---------------------|--------|-------------|---------|
| Chesapeake Black SS | KTF064 | Inboard Set | 6 gauge |
| Chesapeake White SS | KTF063 | Inboard Set | 6 gauge |



The **Outboard Set** comes complete with Speedometer and Pitot, Tachometer, Fuel gauge and Voltmeter.



The **Inboard Set** comes with Speedometer and Pitot, Tachometer, Fuel gauge, Voltmeter, Water Temp gauge and Oil Pressure gauge.

GPS Speedometer

Featured

The GPS Speedometer is a drop-in replacement for your current speedometer.

The GPS **antenna is built-in** to the instruments and does not require an external antenna. **No additional hardware is required.**

The Faria Beede GPS Speedometer uses a highly accurate 48 channel GPS receiver. You can be sure that the GPS Speedometer is giving you the most accurate GPS information available on the market today.

Speed is shown by an analog pointer. This pointer is driven by a digital stepper motor for increased accuracy and minimized pointer bounce.



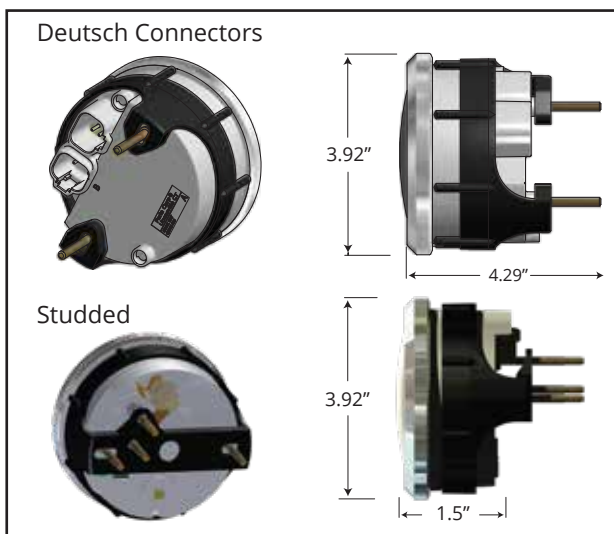
GPS Speedometers

| Catalog# | Factory # | Style | Range | Display | Case |
|----------|-----------|----------------|--------|---------|---------|
| F33726 | SGP004 | Ches. Black SS | 60 MPH | LCD | |
| F33749 | SGP114 | Ches. Black SS | 60 MPH | | Studded |
| F33829 | SGP010 | Ches. White SS | 80 MPH | LCD | |
| F33730 | SGP012 | Ches. Black SS | 80 MPH | LCD | |
| F33826 | SGP003 | Ches. White SS | 60 MPH | LCD | |
| F33839 | SGP113 | Ches. White SS | 60 MPH | | Studded |
| F33147 | SGP111 | Dress White | 60 MPH | | Studded |
| F32816 | SGP110 | Euro Black | 60 MPH | | Studded |
| F22010 | SGP128 | Platinum | 60 MPH | | Studded |



Antenna built in.
No additional parts needed.

Enclosures



Features & Benefits

- Available in multiple speed ranges in MPH, KPH, and KNOTs
- Premium LED back-lit.
- Available with and without LCD displays showing Compass Rose heading and actual heading (COG)
- Fast satellite acquisition time (TTFF)
1 second from Hot Start
- Speed accuracy of +/- 1 MPH
- Heading accuracy of +/- 1 degree
- Digital stepper motor driven pointers
- Perfect for slow moving vessels where pitot tubes just don't work
- Ideal replacement for speed sensing devices (pitot tube and paddle wheel) that can fail over time

Deutsch connectorized harness

This premium style Speedometer is designed with the very latest technology. It is intended to fit directly into today's dash harnesses with easy Plug and Play connectors. Premium LED lighting and an optional diffused LCD display.

Studded harness

The studded Speedometer offers an easy way to add GPS technology to your dash. Designed to fit into existing dash harnesses already installed. The Studded Speedometer connects directly to the battery and ground without the addition of a costly connector. Edge lit dials are easy to read in foul weather. Available in the more popular Faria Beede Classic styles.

Depth Sounders



Featured

Depth Sounders

| Factory # | Style | Transom | In-Hull | Thru-Hull |
|-----------|------------------|---------|---------|-----------|
| DS0101 | Euro Black | F12850 | F12851 | |
| DS0114 | Dress White | F13150 | F13151 | |
| DS0110 | Ches. SS White | F13850 | F13851 | |
| DS0111 | Ches. SS Black | F13750 | F13751 | F13795 |
| DS0101 | Professional Red | F12850 | F12851 | |
| DS0131 | Kronos | F19150 | | |
| DS0176 | Platinum | F22025 | | |

Dual Temperature Depth Sounders

| Factory # | Style | Transom |
|-----------|----------------|---------|
| DS1004 | Ches. SS White | F13852 |
| DS1002 | Ches. SS Black | F13752 |

Features & Benefits

- Depth range: 1- 61 meters (3 -199 feet)
- Deep and Shallow water alarms
- Programmable keel off-set
- Automatic gain control
- Back lighting for maximum night vision
- Metric or US standard units
- Easy to install!

Dual Temperature Depth Sounder can display outside air temperatures, bait well or external water temperatures from 0 °C to 100 °C (32 °F to 200 °F).

Harnesses and connectors included.

Fits a standard 2 1/16" (53 mm) gauge mounting hole.

Accuracy at High Speeds

Our Engineers have incorporated the latest microprocessor technology and proprietary software designed to take advantage of today's high performance transducers. As a result this depth sounder outperforms all others on the market in its high speed capabilities and accuracy when faced with various bottom conditions.

The Depth Sounders from Faria offer a 3-199 foot (1-61meters) depth capability, with an automatic gain control, backlighting for maximum night vision, keel offset, and deep and shallow water alarms.

Depth can be read in meters, and feet. With its oversized back-lit display depth can be easily read in any condition. Audible and Visual alarms let the boater know when a shallow or deep water condition exists. A programmable keel offset lets you adjust the offset from the keel at the display.

Transducers

The Depth Sounder is available with either a Transom, In-Hull or Thru Hull mounted transducer.

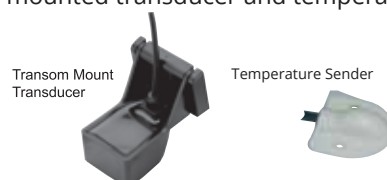


Dual Temperature Depth Sounder

The dual display of the Dual Temperature Depth Sounder can also show temperature of the water, bait well or the ambient air temperature all from one 2" gauge.

Senders and Transducers

The Dual Temperature Depth Sounder comes with a Transom mounted transducer and temperature sender.



5-Inch Gauges and Multifunction Indicators

Dashboards are getting more and more crowded as today's technology explodes on to our boats. Often there are so many beeps and buzzes it's hard to see just what's happening. Of course, you can fill up your dash with lots of little two inch discrete gauges but that too takes more space. That's why Faria Beede developed our multi-function gauge.

We've combined the most useful discrete gauges into a single instrument and then styled them to match many of our standard styles.

Let us be your solution for dash overload.

| Catalog# | Factory # | Size | Style | Description |
|----------|-----------|------|----------------|---|
| F33761 | SGP501 | 5 | Ches. Black SS | Speedometer (60 MPH) (GPS) (Studded) |
| F33763 | TCH323 | 5 | Ches. Black SS | Tachometer with Hourmeter (6000 RPM) (Gas) |
| F33762 | GF4005 | 5 | Ches. Black SS | Multifunction [Fuel, Oil PSI, Water Temp., Voltmeter] |

| Catalog# | Factory # | Size | Style | Description |
|----------|-----------|------|----------------|---|
| F33861 | SGP502 | 5 | Ches. White SS | Speedometer (60 MPH) (GPS) (Studded) |
| F33863 | TC9381 | 5 | Ches. White SS | Tachometer with Hourmeter (6000 RPM) (Gas) |
| F33864 | GF4004 | 5 | Ches. White SS | Multifunction [Fuel, Oil PSI, Water Temp., Voltmeter] |



A Tachometer to fit every need



Tachometer with Digital Hourmeter



SystemCheck Tachometer



Suzuki Monitor Tachometer

Universal Gas and Diesel

These tachometers are available for all ignition systems, alternators and diesel engines. Available with or without a digital hourmeter which records up to 999999.9 hours.

SystemCheck Tachometer

Warning lights for No Oil, Engine Overheat, Check Engine and Low Oil.

Suzuki Monitor Tachometer

Warning lights for Check Engine, Temperature, Oil Level and Rev Limit.

4 and 5 inch sizes with multiple ranges;

- 6000 RPM for Inboard and I/O engines
- 7000 RPM for all Outboard engines
- 4000 RPM for diesel engines



Made in the USA



Chesapeake Black Stainless Steel

Perimeter-lighted black dial with stylish blue and white graphics, polished stainless steel bezel, contoured white pointer, and domed glass lens.

| Catalog | Factory | Size | Description |
|---------|---------|------|--|
| KTF003 | KTF003 | | Boxed Set - Inboard - Speedo (60 MPH) (Mech) Tach (6000 RPM) Fuel Level Voltmeter (10-16 VDC) Water Temp (100-250 F) Oil PSI (80 PSI) |
| KTF064 | KTF064 | | Boxed Set - Inboard - Speedo (60 MPH) (GPS) Tach (6000 RPM) Fuel Level Voltmeter (10-16 VDC) Water Temp (100-250 F) Oil PSI (80 PSI) |
| KTF004 | KTF004 | | Boxed Set - Outboard - Speedo (60 MPH) (Mech) Tach (7000 RPM) Fuel Level Voltmeter (10-16 VDC) |

Depth Sounders

| | | | |
|--------|--------|---|---|
| F13752 | DS1002 | 2 | Depth Sounder with Air and Water Temperature (Transom Mounted Transducer) |
| F13750 | DS0111 | 2 | Depth Sounder (Transom Mounted Transducer) |
| F13751 | DS0111 | 2 | Depth Sounder (In-Hull Mounted Transducer) |
| F13795 | DS0111 | 2 | Depth Sounder (Thru-Hull Transducer) (Requires 1 5/8" hole in vessel.) |

Tachometers

| | | | |
|--------|--------|---|---|
| F33710 | TC9785 | 4 | Tachometer (6000 RPM) (Gas) (Inboard & I/O) |
| F33718 | TC9035 | 4 | Tachometer (7000 RPM) (All outboard) |
| F33742 | TD9127 | 4 | Tachometer (4000 RPM) (Diesel) (Mechanical takeoff & var ratio alt) |
| F33763 | TCH323 | 5 | Tachometer with Hourmeter (6000 RPM) (Gas) (Inboard) |
| F33732 | TC9127 | 4 | Tachometer with Hourmeter (6000 RPM) (Gas) (Inboard) |
| F33750 | TC9884 | 4 | Tachometer (7000 RPM) with SystemCheck Indicator (Gas) (J/E Outboard) |

GPS Speedometers

| | | | |
|--------|--------|---|--------------------------------------|
| F33761 | SGP501 | 5 | Speedometer (60 MPH) (GPS) (Studded) |
| F33730 | SGP012 | 4 | Speedometer (80 MPH) (GPS) (LCD) |
| F33726 | SGP004 | 4 | Speedometer (60 MPH) (GPS) (LCD) |
| F33749 | SGP114 | 4 | Speedometer (60 MPH) (GPS) (Studded) |

Speedometers

| | | | |
|--------|--------|---|------------------------------|
| F33704 | SE9509 | 4 | Speedometer (60 MPH) (Pitot) |
|--------|--------|---|------------------------------|

Multi-Function Instruments

| | | | |
|--------|--------|---|--|
| F33762 | GF4005 | 5 | Multifunction [Fuel Level Oil PSI (80 PSI) Water Temp (120-220 F) Voltmeter (10-18 VDC)] |
| F33751 | GF0007 | 4 | Multifunction [Fuel Level Oil PSI (80 PSI) Water Temp (120-220 F) Voltmeter (10-18 VDC)] |

Indicators

| | | | | | | | |
|--------|--------|---|---|--------|--------|---|-----------------------------------|
| F13701 | GP9368 | 2 | Fuel Level Gauge (E-1/2-F) | F13709 | GP9414 | 2 | Trim Gauge (J/E/Suzuki Outboard) |
| F13721 | GP9777 | 2 | Fuel Level Gauge (Metric) | F13736 | AP9530 | 2 | Ammeter (60-0-60) |
| F13702 | GP9640 | 2 | Oil Pressure Gauge (80 PSI) | F13715 | MH0239 | 2 | Hourmeter [Digital] (12-32 volts) |
| F13712 | OP1018 | 2 | Water Pressure Gauge Kit (30 PSI) | F13725 | GP7377 | 2 | Rudder Angle Indicator |
| F13704 | GP9142 | 2 | Water Temperature Gauge (100-250 F) | F13705 | VP9154 | 2 | Voltmeter (10-16 VDC) |
| F13707 | GP9402 | 2 | Trim Gauge (Mercury/Mariner/Mercuriser/Volvo DP/ Yamaha-2001 and newer) | | | | |

Chesapeake White Stainless Steel

Perimeter-lighted white dial with stylish blue and black graphics, polished stainless steel bezel, contoured black pointer, and domed glass lens.



| Catalog | Factory | Size | Description |
|---------|---------|------|--|
| KTF001 | KTF001 | | Boxed Set - Inboard - Speedo (60 MPH) (Mech) Tach (6000 RPM) Fuel Level Voltmeter (10-16 VDC) Water Temp (100-250 F) Oil PSI (80 PSI) |
| KTF063 | KTF063 | | Boxed Set - Inboard - Speedo (60 MPH) (GPS) Tach (6000 RPM) Fuel Level Voltmeter (10-16 VDC) Water Temp (100-250 F) Oil PSI (80 PSI) |
| KTF002 | KTF002 | | Boxed Set - Outboard - Speedo (60 MPH) (Mech) Tach (7000 RPM) Fuel Level Voltmeter (10-16 VDC) |

Depth Sounders

| | | | |
|--------|--------|---|---|
| F13852 | DS1004 | 2 | Depth Sounder with Air and Water Temperature (Transom Mounted Transducer) |
| F13850 | DS0110 | 2 | Depth Sounder (Transom Mounted Transducer) |
| F13851 | DS0110 | 2 | Depth Sounder (In-Hull Mounted Transducer) |

Tachometers

| | | | |
|--------|--------|---|--|
| F33807 | TC9796 | 4 | Tachometer (6000 RPM) (Gas) (Inboard & I/O) |
| F33817 | TC9002 | 4 | Tachometer (7000 RPM) (All outboard) |
| F33842 | TD9128 | 4 | Tachometer (4000 RPM) (Diesel) (Mechanical takeoff & var ratio alt) |
| F33818 | TD9733 | 4 | Tachometer (4000 RPM) (Diesel) (Mag Pick-Up) |
| F33863 | TC9381 | 5 | Tachometer with Hourmeter (6000 RPM) (Gas) (Inboard) |
| F33832 | TC9128 | 4 | Tachometer with Hourmeter (6000 RPM) (Gas) (Inboard) |
| F33840 | TCH008 | 4 | Tachometer w/ Hourmeter (7000 RPM) (Gas)(Outboard) |
| F33834 | TD9108 | 4 | Tachometer with Hourmeter (4000 RPM) (Diesel) (Mech takeoff & var ratio alt) |
| F33850 | TC9881 | 4 | Tachometer (7000 RPM) with SystemCheck Indicator (Gas) (J/E Outboard) |

GPS Speedometers

| | | | |
|--------|--------|---|--------------------------------------|
| F33861 | SGP502 | 5 | Speedometer (60 MPH) (GPS) (Studded) |
| F33829 | SGP010 | 4 | Speedometer (80 MPH) (GPS) |
| F33826 | SGP003 | 4 | Speedometer (60 MPH) (GPS) |
| F33839 | SGP113 | 4 | Speedometer (60 MPH) (GPS) (Studded) |

Speedometers

| | | | |
|--------|--------|---|------------------------------|
| F33811 | SE9521 | 4 | Speedometer (60 MPH) (Pitot) |
| F33819 | SE9522 | 4 | Speedometer (80 MPH) (Pitot) |

Multi-Function Instruments

| | | | |
|--------|--------|---|--|
| F33801 | SY9629 | 4 | Synchronizer (Dual Engine) Gas and Variable Ratio / Alternator type diesels only. |
| F33864 | GF4004 | 5 | Multifunction [Fuel Level Oil PSI (80 PSI) Water Temp (120-220 F) Voltmeter (10-18 VDC)] |
| F33851 | GF0008 | 4 | Multifunction [Fuel Level Oil PSI (80 PSI) Water Temp (120-220 F) Voltmeter (10-18 VDC)] |

Indicators

| | | | | | | | |
|--------|--------|---|--|--------|--------|---|---|
| F13801 | GP9373 | 2 | Fuel Level Gauge (E-1/2-F) | F13889 | GP7440 | 2 | Trim Gauge (Honda) |
| F13818 | GP9791 | 2 | Fuel Level Gauge (Metric) | F13807 | GP9649 | 2 | Trim Gauge (Mercury/Mariner/Mercruiser/Volvo DP/ Yamaha-2001 and newer) |
| F13802 | GP9647 | 2 | Oil Pressure Gauge (80 PSI) | F13809 | GP9418 | 2 | Trim Gauge (J/E/Suzuki Outboard) |
| F13812 | OP1022 | 2 | Water Pressure Gauge Kit (30 PSI) | F13808 | GP9734 | 2 | Trim Gauge (OMC Cobra (1993-1994) / Volvo SX (MD models only)) |
| F13806 | GP9454 | 2 | Cylinder Head Temperature (60 - 220 F) with sender | F13822 | GP7378 | 2 | Rudder Angle Indicator |
| F13804 | GP9146 | 2 | Water Temperature Gauge (100-250 F) | F13815 | MH0211 | 2 | Hourmeter [Digital] (12-32 volts) |
| F13828 | GP9178 | 2 | Water Temperature Gauge (40-120 C) (Metric) | F13805 | VP9158 | 2 | Voltmeter (10-16 VDC) |
| F13891 | CL1026 | 2 | Clock (Quartz) (Analog) | | | | |



Coral

Perimeter-lighted black dial with stylish white and blue graphics, black aluminum bezel with burnished leading edge, contoured white pointer, and flat glass lens.

| Catalog | Factory | Size | Description | | | | | |
|--------------|---------|------|--|--|--------|--------|---|---|
| Tachometers | | | | | | | | |
| F33004 | TC9493 | 4 | Tachometer (6000 RPM) (Gas) (Inboard & I/O) | | | | | |
| F33005 | TC9036 | 4 | Tachometer (7000 RPM) (All outboard) | | | | | |
| Speedometers | | | | | | | | |
| F33009 | SE9216 | 4 | Speedometer (55 MPH) (Pitot) | | | | | |
| Indicators | | | | | | | | |
| F13001 | GP9346 | 2 | Fuel Level Gauge (E-1/2-F) | | F13017 | GP9348 | 2 | Trim Gauge (Mercury/Mariner/Mercruiser/Volvo DP/ Yamaha-2001 and newer) |
| F13020 | GP9390 | 2 | Fuel Level Gauge (Metric) | | | | | |
| F13002 | GP9527 | 2 | Oil Pressure Gauge (80 PSI) | | F13016 | GP9273 | 2 | Trim Gauge (J/E/Suzuki Outboard) |
| F13003 | OP1000 | 2 | Water Pressure Gauge Kit (30 PSI) | | F13013 | MH0024 | 2 | Hourmeter [Digital] (12-32 volts) |
| F13009 | GP9405 | 2 | Cylinder Head Temperature (60 - 220 F) with sender | | F13010 | VP9106 | 2 | Voltmeter (10-16 VDC) |
| F13004 | GP9461 | 2 | Water Temperature Gauge (100-250 F) | | | | | |



The choice of the world's leading boat manufacturers since 1957.

All of our instruments are performance proven under the most demanding conditions. They are factory installed original equipment with major manufacturers worldwide. You can rely on Faria Beede Instruments, Inc. for world class quality, dependability and ease of installation.

Contact Faria Beede for OEM gauge replacements. Many of the OEM styles can still be purchased through our Marine distributors. Before you contact us, have a picture of the gauge and the part number readily available. This helps us to identify the gauge, so that we can better assist you.



Dress White

Perimeter-lighted white dial with bold black graphics, white aluminum bezel, contoured black pointer, and flat glass lens.



| Catalog | Factory | Size | Description |
|---------|---------|------|--|
| KT9797 | KT9797 | | Boxed Set - Inboard - Speedo (55 MPH) (Mech) Tach (6000 RPM) Fuel Level Voltmeter (10-16 VDC) Water Temp (100-250 F) Oil PSI (80 PSI) |
| KT9794 | KT9794 | | Boxed Set - Outboard - Speedo (55 MPH) (Mech) Tach (7000 RPM) Fuel Level Voltmeter (10-16 VDC) |

Depth Sounders

| | | | |
|--------|--------|---|--|
| F13150 | DS0114 | 2 | Depth Sounder (Transom Mounted Transducer) |
| F13151 | DS0114 | 2 | Depth Sounder (In-Hull Mounted Transducer) |

Tachometers

| | | | |
|--------|--------|---|---|
| F33103 | TC9691 | 4 | Tachometer (6000 RPM) (Gas) (Inboard & I/O) |
| F33104 | TC9038 | 4 | Tachometer (7000 RPM) (All outboard) |
| F33132 | TC9124 | 4 | Tachometer with Hourmeter (6000 RPM) (Gas) (Inboard) |
| F33140 | TCH013 | 4 | Tachometer with Hourmeter (7000 RPM) (Gas) (Outboard) |
| F33150 | TC9887 | 4 | Tachometer (7000 RPM) with SystemCheck Indicator (Gas) (J/E Outboard) |

GPS Speedometers

| | | | |
|--------|--------|---|--------------------------------------|
| F33147 | SGP111 | 4 | Speedometer (60 MPH) (GPS) (Studded) |
|--------|--------|---|--------------------------------------|

Speedometers

| | | | |
|--------|--------|---|------------------------------|
| F33112 | SE9475 | 4 | Speedometer (55 MPH) (Pitot) |
| F33113 | SE9476 | 4 | Speedometer (80 MPH) (Pitot) |

Multi-Function Instruments

| | | | |
|--------|--------|---|---|
| F33105 | SY9618 | 4 | Synchronizer (Dual Engine) Gas and Variable Ratio / Alternator type diesels only. |
|--------|--------|---|---|

Indicators

| | | | | | | | |
|--------|--------|---|--|--------|--------|---|--|
| F13101 | GP9389 | 2 | Fuel Level Gauge (E-1/2-F) | F13122 | GP9712 | 2 | Trim Gauge (Mercury/Mariner/Mercruiser/Volvo DP/Yamaha-2001 and newer) |
| F13117 | GP9722 | 2 | Fuel Level Gauge (Metric) | F13123 | GP9711 | 2 | Trim Gauge (J/E/Suzuki Outboard) |
| F13102 | GP9573 | 2 | Oil Pressure Gauge (80 PSI) | F13130 | MH0240 | 2 | Hourmeter [Digital] (12-32 volts) |
| F13108 | OP1006 | 2 | Water Pressure Gauge Kit (30 PSI) | F13120 | VP9139 | 2 | Voltmeter (10-16 VDC) |
| F13113 | GP9444 | 2 | Cylinder Head Temperature (60 - 220 F) with sender | | | | |
| F13110 | GP9120 | 2 | Water Temperature Gauge (100-250 F) | | | | |



Euro

Perimeter-lighted black dial with bold white graphics, black aluminum bezel, contoured white pointer, and flat glass lens.

| Catalog | Factory | Size | Description |
|---------|---------|------|--|
| KT9799 | KT9799 | | Boxed Set - Inboard - Speedo (55 MPH) (Mech) Tach (6000 RPM) Fuel Level Voltmeter (10-16 VDC) Water Temp (100-250 F) Oil PSI (80 PSI) |
| KT9796 | KT9796 | | Boxed Set - Outboard - Speedo (55 MPH) (Mech) Tach (7000 RPM) Fuel Level Voltmeter (10-16 VDC) |

Depth Sounders

| | | | |
|--------|--------|---|--|
| F12850 | DS0101 | 2 | Depth Sounder (Transom Mounted Transducer) |
| F12851 | DS0101 | 2 | Depth Sounder (In-Hull Mounted Transducer) |

Tachometers

| | | | |
|--------|--------|---|--|
| F32804 | TC9643 | 4 | Tachometer (6000 RPM) (Gas) (Inboard & I/O) |
| F32805 | TC9011 | 4 | Tachometer (7000 RPM) (All outboard) |
| F32842 | TD9122 | 4 | Tachometer (4000 RPM) (Diesel) (Mechanical takeoff & var ratio alt) |
| F32803 | TD9671 | 4 | Tachometer (4000 RPM) (Diesel) (Mag Pick-Up) |
| F32832 | TC9122 | 4 | Tachometer with Hourmeter (6000 RPM) (Gas) (Inboard) |
| F32840 | TCH015 | 4 | Tachometer with Hourmeter (7000 RPM) (Gas) (Outboard) |
| F32834 | TD9102 | 4 | Tachometer with Hourmeter (4000 RPM) (Diesel) (Mech takeoff & var ratio alt) |
| F32850 | TC9951 | 4 | Tachometer (7000 RPM) with SystemCheck Indicator (Gas) (J/E Outboard) |

Speedometers

| | | | |
|--------|--------|---|-----------------------------------|
| F32810 | SE9463 | 4 | Speedometer (55 MPH) (Mechanical) |
| F32812 | SE9460 | 4 | Speedometer (80 MPH) (Mechanical) |

GPS Speedometers

| | | | |
|--------|--------|---|--------------------------------------|
| F32816 | SGP110 | 4 | Speedometer (60 MPH) (GPS) (Studded) |
|--------|--------|---|--------------------------------------|

Multi-Function Instruments

| | | | |
|--------|--------|---|--|
| F32851 | GF0001 | 4 | Multifunction [Fuel Level Oil PSI (80 PSI) Water Temp (100-250 F) Voltmeter (10-16 VDC)] |
|--------|--------|---|--|

Indicators

| | | | | | | | |
|--------|--------|---|--|--------|--------|---|---|
| F12801 | GP9357 | 2 | Fuel Level Gauge (E-1/2-F) | F12814 | GP9124 | 2 | Water Temperature Gauge (40-120 C) (Metric) |
| F12802 | GP9322 | 2 | Fuel Level Gauge (Metric) | F12828 | GP9374 | 2 | Trim Gauge (Mercury/Mariner/Mercruiser/Volvo DP/ Yamaha-2001 and newer) |
| F12830 | GP9324 | 2 | Tank Level Gauge (Potable water) | F12827 | GP9305 | 2 | Trim Gauge (J/E/Suzuki Outboard) |
| F12831 | GP9326 | 2 | Tank Level Gauge (Potable water) (Metric) | F12822 | AP9523 | 2 | Ammeter (60-0-60) |
| F12803 | GP9599 | 2 | Oil Pressure Gauge (80 PSI) | F12823 | VP7901 | 2 | Battery Condition Indicator (12 VDC) |
| F12845 | GP9597 | 2 | Oil Pressure Gauge (100 PSI) | F12825 | CL1008 | 2 | Clock (Quartz) (Analog) |
| F12805 | GP9511 | 2 | Oil Pressure Gauge (5 BAR) (Metric) | F12835 | MH0232 | 2 | Hourmeter [Digital] (12-32 volts) |
| F12810 | OP1004 | 2 | Water Pressure Gauge Kit (30 PSI) | F12833 | GP7373 | 2 | Rudder Angle Indicator |
| F12875 | OP1014 | 2 | Water Pressure Gauge Kit (60 PSI) | F12821 | VP9134 | 2 | Voltmeter (10-16 VDC) |
| F12819 | GP9438 | 2 | Cylinder Head Temperature (60 - 220 F) with sender | F12860 | VP9191 | 2 | Voltmeter (20-32 VDC) |
| F12812 | GP9118 | 2 | Water Temperature Gauge (100-250 F) | | | | |

Blank Gauges

| | | | |
|--------|--------|---|------------------|
| F32861 | TC9640 | 4 | Blank gauge fill |
| F12861 | AP9475 | 2 | Blank gauge fill |

Euro White

Perimeter-lighted white dial with bold black graphics, black aluminum bezel, contoured white pointer, and flat glass lens.



| Catalog | Factory | Size | Description |
|---------|---------|------|--|
| KT9798 | KT9798 | | Boxed Set - Inboard - Speedo (55 MPH) (Mech) Tach (6000 RPM) Fuel Level Voltmeter (10-16 VDC) Water Temp (100-250 F) Oil PSI (80 PSI) |
| KT9795 | KT9795 | | Boxed Set - Outboard - Speedo (55 MPH) (Mech) Tach (7000 RPM) Fuel Level Voltmeter (10-16 VDC) |

Tachometers

| | | | |
|--------|--------|---|---|
| F32904 | TC9679 | 4 | Tachometer (6000 RPM) (Gas) (Inboard & I/O) |
| F32905 | TC9003 | 4 | Tachometer (7000 RPM) (All outboard) |
| F32942 | TD9123 | 4 | Tachometer (4000 RPM) (Diesel) (Mechanical takeoff & var ratio alt) |
| F32950 | TC9886 | 4 | Tachometer (7000 RPM) with SystemCheck Indicator (Gas) (I/E Outboard) |

Speedometers

| | | | |
|--------|--------|---|------------------------------|
| F32909 | SE9473 | 4 | Speedometer (55 MPH) (Pitot) |
|--------|--------|---|------------------------------|

Indicators

| | | | | | | | |
|--------|--------|---|--|--------|--------|---|---|
| F12901 | GP9358 | 2 | Fuel Level Gauge (E-1/2-F) | F12916 | GP9709 | 2 | Trim Gauge (Mercury/Mariner/Mercruiser/Volvo DP/ Yamaha-2001 and newer) |
| F12902 | GP9596 | 2 | Oil Pressure Gauge (80 PSI) | F12915 | GP9708 | 2 | Trim Gauge (I/E/Suzuki Outboard) |
| F12903 | OP1005 | 2 | Water Pressure Gauge Kit (30 PSI) | F12913 | MH0243 | 2 | Hourmeter [Digital] (12-32 volts) |
| F12910 | GP9439 | 2 | Cylinder Head Temperature (60 - 220 F) with sender | F12911 | VP9136 | 2 | Voltmeter (10-16 VDC) |
| F12904 | GP9119 | 2 | Water Temperature Gauge (100-250 F) | | | | |



Kronos style pictured. (page 13)



Kronos

Polished Stainless Steel Bezel, Flat Glass Lens, Perimeter Lighted Spun Aluminum dial with Gold and Black graphics. Gold increments and Logo on dial are Embossed. All instruments include two piece Newport Pointer with White Hub.

| Catalog | Factory | Size | Description |
|---------|---------|------|---|
| KTF024 | KTF024 | | Boxed Set - Inboard - Speedo - 60 MPH) (Mech) Tach (6000 RPM) Fuel Level Voltmeter (10-16 VDC) Water Temp (100-250 F) Oil PSI (80 PSI) |

Depth Sounders

| | | | |
|--------|--------|---|--|
| F19150 | DS0131 | 2 | Depth Sounder (In-Hull Mounted Transducer) |
|--------|--------|---|--|

Tachometers

| | | | |
|--------|--------|---|---|
| F39004 | TC9983 | 4 | Tachometer (6000 RPM) (Gas) (Inboard & I/O) |
| F39005 | TC9252 | 4 | Tachometer (7000 RPM) (All outboard) |
| F39040 | TCH305 | 4 | Tachometer with Hourmeter (7000 RPM) (Gas) (Outboard) |

Speedometers

| | | | |
|--------|--------|---|------------------------------|
| F39009 | SE9945 | 4 | Speedometer (60 MPH) (Pitot) |
|--------|--------|---|------------------------------|

Indicators

| | | | | | | | |
|--------|--------|---|-------------------------------------|--------|--------|---|---|
| F19001 | GP7683 | 2 | Fuel Level Gauge (E-1/2-F) | F19005 | GP7681 | 2 | Trim Gauge (Mercury/Mariner/Mercruiser/Volvo DP/ Yamaha-2001 and newer) |
| F19002 | GP7684 | 2 | Oil Pressure Gauge (80 PSI) | F19020 | MH0144 | 2 | Hourmeter (10,000 hrs) (12-32 VDC) |
| F19007 | OP1171 | 2 | Water Pressure Gauge Kit (30 PSI) | F19004 | VP7102 | 2 | Voltmeter (10-16 VDC) |
| F19003 | GP7682 | 2 | Water Temperature Gauge (100-250 F) | | | | |

Professional Red

Perimeter-lighted black dial with stylish red and white graphics, black aluminum bezel, tear-drop white pointer, and flat glass lens.



| Catalog | Factory | Size | Description |
|-----------------------|---------|------|--|
| Depth Sounders | | | |
| F12850 | DS0101 | 2 | Depth Sounder (Transom Mounted Transducer) |
| F12851 | DS0101 | 2 | Depth Sounder (In-Hull Mounted Transducer) |

Tachometers

| | | | |
|--------|--------|---|---|
| F34607 | TC9933 | 4 | Tachometer (6000 RPM) (Gas) (Inboard & I/O) |
| F34617 | TC9026 | 4 | Tachometer (7000 RPM) (All outboard) |
| F34650 | TC9934 | 4 | Tachometer (7000 RPM) with SystemCheck Indicator (Gas) (I/E Outboard) |

Speedometer

| | | | |
|--------|--------|---|------------------------------|
| F34611 | SE9777 | 4 | Speedometer (60 mph) (Pitot) |
|--------|--------|---|------------------------------|

Indicators

| | | | | | | | |
|--------|--------|---|-------------------------------------|--------|--------|---|---|
| F14601 | GP7282 | 2 | Fuel Level Gauge (E-1/2-F) | F14607 | GP7422 | 2 | Trim Gauge (Mercury/Mariner/Mercruiser/Volvo DP/ Yamaha-2001 and newer) |
| F14602 | GP7063 | 2 | Oil Pressure Gauge (80 PSI) | F14613 | MH0232 | 2 | Hourmeter [Digital] (12-32 volts) |
| F14612 | OP1057 | 2 | Water Pressure Gauge Kit (30 PSI) | F14605 | VP7042 | 2 | Voltmeter (10-16 VDC) |
| F14604 | GP7166 | 2 | Water Temperature Gauge (100-250 F) | | | | |



Made in the USA



Platinum

Polished Stainless Steel Bezel, Domed Fog Resistant Glass Lens, Perimeter Lighted Spun Aluminum dial with White and Black graphics. LED back lighted pointer with orange tip.

| Catalog | Factory | Size | Description | | | | | |
|-----------------------------------|---------|------|---|--|--------|--------|---|---|
| KTF0186 | KTF0186 | | Boxed Set - Inboard - Speedo (70 MPH) (Mech) Tach (7000 RPM) Fuel Level Voltmeter (10-16 VDC) Water Temp (100-250 F) Oil PSI (80 PSI) | | | | | |
| KTF0185 | KTF0185 | | Boxed Set - Outboard - Speedo (70 MPH) (Mech) Tach (7000 RPM) Fuel Level Voltmeter (10-16 VDC) | | | | | |
| Depth Sounders | | | | | | | | |
| F22025 | DS0176 | 2 | Depth Sounder (In-Hull Mounted Transducer) | | | | | |
| Tachometers | | | | | | | | |
| F22009 | TC8511 | 4 | Tachometer (7000 RPM) (Gas) (Inboard, Outboards & I/O) | | | | | |
| Speedometers | | | | | | | | |
| F22010 | SGP128 | 4 | Speedometer (60 MPH) (GPS) (Studded) | | | | | |
| F22012 | SE9864 | 4 | Speedometer (50 MPH) (Pitot) | | | | | |
| F22011 | SE9863 | 4 | Speedometer (70 MPH) (Pitot) | | | | | |
| Multi-Function Instruments | | | | | | | | |
| F22014 | GF0417 | 4 | Multifunction [Fuel Level Oil PSI (80 PSI) Water Temp (120-220 F) Voltmeter (10-18 VDC)] | | | | | |
| F22015 | GS0075 | 4 | Multifunction [Speedometer (65 MPH) (Pitot) Fuel Level] | | | | | |
| F22016 | GT0104 | 4 | Multifunction [Tachometer (7000 RPM) Voltmeter (10-16 VDC)] | | | | | |
| F22013 | GF0275 | 4 | Multifunction [Fuel Level Voltmeter (10-16 VDC)] | | | | | |
| Indicators | | | | | | | | |
| F22021 | GP5088 | 2 | Fuel Level Gauge (E-1/2-F) | | F22019 | GP5086 | 2 | Trim Gauge (Mercury/Mariner/Mercruiser/Volvo DP/ Yamaha-2001 and newer) |
| F22024 | GP5089 | 2 | Oil Pressure Gauge (80 PSI) | | | | | |
| F22023 | OP1177 | 2 | Water Pressure Gauge Kit (30 PSI) | | F22018 | GP5085 | 2 | Trim Gauge (Honda) |
| F22017 | GP5084 | 2 | Water Temperature Gauge (100-250 F) | | F22020 | GP5087 | 2 | Trim Gauge (J/E/Suzuki Outboard) |
| F13715 | MH239 | 2 | Hourmeter [Digital] (12-32 volts) | | F22022 | VP7179 | 2 | Voltmeter (10-16 VDC) |

Spun Silver

Perimeter-lighted silver dial with bold black graphics, polished stainless steel bezel, contoured black pointer, and domed glass lens.



| Catalog | Factory | Size | Description | | | | |
|-------------|---------|------|--|--------|--------|---|--|
| KTF0184 | KTF0184 | | Boxed Set - Inboard - Speedo (65 MPH) (Mech) Tach (7000 RPM) Fuel Level Voltmeter (10-16 VDC) Water Temp (100-250 F) Oil PSI (80 PSI) | | | | |
| | | | | | | | |
| Tachometers | | | | | | | |
| F36004 | TC9476 | 4 | Tachometer (6000 RPM) (Gas) (Inboard & I/O) | | | | |
| F36005 | TC9004 | 4 | Tachometer (7000 RPM) (All outboard) | | | | |
| F36032 | TC9196 | 4 | Tachometer with Hourmeter (6000 RPM) (Gas) (Inboard) | | | | |
| | | | | | | | |
| Speedometer | | | | | | | |
| F36010 | SE9910 | 4 | Speedometer (65 MPH) (Pitot) | | | | |
| | | | | | | | |
| Indicators | | | | | | | |
| F16001 | GP9932 | 2 | Fuel Level Gauge (E-1/2-F) | F16016 | GP9223 | 2 | Trim Gauge (Mercury/Mariner/Mercruiser/ Volvo DP/ Yamaha-2001 and newer) |
| F16004 | GP9428 | 2 | Water Temperature Gauge (100-250 F) | | | | |
| F16002 | GP9423 | 2 | Oil Pressure Gauge (80 PSI) | F16023 | VP9223 | 2 | Voltmeter (10-16 VDC) |
| F16020 | MH0114 | 2 | Hourmeter (10,000 hrs) (12-32 VDC) | | | | |



Repair costs can get expensive.

Restore • Replace • Rebuild • Repower

with Boxed Sets from Faria Beede. A cost effective OEM gauge replacement option.



Boxed Sets offer a complete set of instruments and everything you need to replace your old OEM installed instruments.

With many styles to choose from, Faria Beede has the look you want and savings that is easy on the budget.

When upgrading your engine don't forget about your instruments.

Faria Beede has an easy plug and play instrument replacement set that works with your new engine.

Faria Beede Limited Warranty

During the initial warranty period of 36 months from date of original retail purchase (12 months on Depth Sounder, MG1000 and MG3000 and 24 months on Senders, Transducers, Tri-ducers and Smartducers), any instrument(s) that fails due to defects in materials or workmanship will be repaired or replaced at Faria Beede Instruments' at no charge.

Once beyond the initial warranty period repair fees apply.

For more information go to
warranty.fariabeede.com

Transducers, Pitots

Combined with our Depth Sounders and other electronic instrumentation these transducers and senders offer a wide range of options to fit your needs.



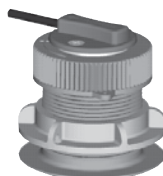
SN2010
Adjustable In-hull Transducer

This in-hull transducer has a patented adjustable feature which ensures that sound waves are transmitted vertically to the bottom on almost any hull with a dead rise up to 22°. With no hull penetration, installation is easy and high speed performance is maximized.



SN2011
Transom Mounted Depth Transducer

With a low profile this depth unit offers little drag and easy installation for dead rise angles up to 30°. Designed with a release bracket to protect against impact damage. This unit provides good high speed operations up to 55 knots.



SN0015
Thru-hull Flush Mounted Temperature and Speed Sender

Perfect for water sports which require continuous accurate speed measurements like water-skiing, where boat angles can sometimes interrupt transom mounted senders. The thru-hull flush mounted temperature and speed sender offer virtually no drag. Easy installation and accuracy makes this sender the perfect choice for water sports. (Requires 1 5/8" hole in vessel.)



SN2031
Retractable Tri-ducer Thru-Hull Transducer
Depth / Paddle Wheel Speed / Temperature Sensor
1 5/8" thru hull depth transducer.
(Requires 1 5/8" hole in vessel.)



SN2060A
Thru-hull Transducer
1 5/8" thru hull depth transducer.
(Requires 1 5/8" hole in vessel.)



Pitot Tubes Assembly Kits
Complete transom mount speedometer pick-up with escutcheon plate and mounting hardware (two choices of tubing length) for use with all marine speedometers.

| Catalog | Factory | Description |
|---------|---------|---|
| F91109 | KS9007 | PITOT KIT (Universal) |
| F91106 | KS9003 | PITOT KIT (Universal) (20 ft. tubing) |
| F91105 | CG0001 | PITOT KIT (Escutcheon cover plate for pitot tubing) |

Accessories - Senders

Fuel Level Senders

SAE 5 hole flange, adjustable for left or right arm movements and various tank depths. Includes gasket and screws and 2 #10 stud terminals.

Sealing gasket and mounting hardware required.

| Catalog | Factory | Description |
|---------|---------|--|
| F91001 | LS6025 | SENDER (Fuel Level) (American 8-16 inch) (Single) |
| F91003 | LS6026 | SENDER (Fuel Level) (American 14-24 inch) (Single) |
| F91005 | LS6028 | SENDER (Fuel Level) (European 20-40 cm) (Single) |



(For Tanks 6 to 25" deep)

Temperature Senders

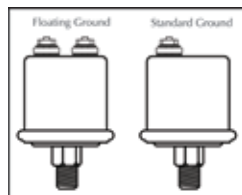
- 1/8" NPTF
- A wide variety of sender types
- Metric and Standard values available

| Catalog | Factory | Description |
|---------|---------|---|
| F90401 | TS1029 | SENDER (Temperature) (1/8) (American Single Standard) |
| F90402 | TS2035 | SENDER (Temperature) (1/4) (American Single Standard) |
| F90403 | TS3044 | SENDER (Temperature) (3/8) (American Single Standard) |
| F90404 | TS4042 | SENDER (Temperature) (1/2) (American Single Standard) |
| F90406 | TS1056 | SENDER (Temperature) (1/8) (American Dual Standard) |
| F90412 | TS1058 | SENDER (Temperature) (1/8) (European Single Standard) |
| F90405 | TS5026 | SENDER (Cylinder Head Temperature) |



Pressure Senders

- 1/8" NPTF
- A wide variety of sender types
- Metric and Standard values available



| Catalog | Factory | Description |
|---------|---------|---|
| F90512 | SD0003 | SENDER (Oil Pressure) (1/8 NPTF American 80 PSI) (Single Standard) |
| F90511 | SD0025 | SENDER (Oil Pressure) (1/8 NPTF American 80 PSI) (Dual Standard) |
| F90516 | SD0031 | SENDER (Oil Pressure) (1/8 NPTF European 5 BAR) (Single Float) |
| F90519 | SD0006 | SENDER (Oil Pressure) (1/8 NPTF American 100 PSI) (Single Standard) |
| F90526 | SD0035 | SENDER (Oil Pressure) (1/8 NPTF European 10 BAR) (Single Standard) |



Other Senders

| Catalog | Factory | Description |
|---------|---------|--|
| F90530 | SD0041 | SENDER (Rudder Angle) (Single station) (Standard or Floating ground) |
| F90901 | DK9005 | SENDER (Tachometer) (Diesel) (Mechanical takeoff) |

Lighting Replacements

| | | |
|--------|--------|---|
| KTF053 | LM0067 | LIGHTING [LED] (Bulb replacement pack (BLUE) (4 inch gauges) (2 pack) |
| KTF052 | LM0078 | LIGHTING [LED] (Bulb replacement pack (BLUE) (2 inch gauges) (2 pack) |



Specifications

Our instruments are manufactured by Faria Beede Instruments., Inc. in Connecticut and Indiana, USA. We are an ISO:9001-2015 registered company. Our instruments and senders are built to stringent standards and have passed a comprehensive quality control procedure prior to shipment. Each instrument is backed by the Faria Beede Limited Warranty.

4" & 5" Electronic Instruments

| | |
|-----------------------|--|
| Operating Temperature | -4 °F to +158° F (-20° C to +70° C) |
| Storage Temperature | -22° F to +185° F (-30° C to +85° C) |
| Lighting | See product line for specific information |
| Operating Voltage | 11.5 to 16 volts |
| Nominal Voltage | 14.2 volts |
| Current Consumption | < 100 mA, without illumination |
| Bezel | Stainless Steel or Aluminum - see product line for specific information |
| Lens | Glass or Poly carbonate - see product line for specific information |
| Connection | Studs, blade terminals, connectors - see product line for specific information |
| Mounting Bracket | Plastic mounting clamp. Clamping range 0 -.8" (0-20 mm) |
| Torque | 5 to 7 inch pounds (.57 - .80 Nm) |
| Mounting Hole | 3 3/8" (85 mm) for 4" Instrument – 4 3/8" (112 mm) for 5" Instrument |

4" & 5" Mechanical Instruments

| | |
|-----------------------|---|
| Operating Temperature | -22° F to +185° F (-30° C to +85° C) |
| Storage Temperature | -40° F to +221° F (-40° C to +105° C) |
| Lighting | See product line for specific information |
| Bezel | Stainless Steel or Aluminum - see product line for specific information |
| Lens | Glass or Poly carbonate - see product line for specific information |
| Connection | Studs, blade terminals - see product line for specific information |
| Mounting Bracket | Plastic mounting clamp. Clamping range 0 -.8" (0-20 mm) |
| Torque | 5 to 7 inch pounds (.57 - .80 Nm) |
| Mounting Hole | 3 3/8" (85 mm) for 4" Instrument – 4 3/8" (112 mm) for 5" Instrument |

2" Electronic Instruments

| | |
|-----------------------|--|
| Operating Temperature | -4 °F to +158°F (-20° C to +70° C) |
| Storage Temperature | -22° F to +185°F (-30° C to +85° C) |
| Lighting | See product line for specific information |
| Operating Voltage | 11.5 to 16 volts |
| Nominal Voltage | 14.2 volts |
| Current Consumption | < 100 mA, without illumination |
| Bezel | Stainless Steel or Aluminum - see product line for specific information |
| Lens | Glass or Poly carbonate - see product line for specific information |
| Connection | Studs, blade terminals, connectors - see product line for specific information |
| Mounting Bracket | Plastic mounting clamp. Clamping range 0 -.8" (0-20 mm) |
| Torque | 5 to 7 inch pounds (.57 - .80 Nm) |
| Mounting Hole | 2 1/16" (53 mm) for 2" Instrument |

2" Mechanical Instruments

| | |
|-----------------------|---|
| Operating Temperature | -22 °F to +185°F (-30° C to +85° C) |
| Storage Temperature | -40 °F to +221°F (-40° C to +105° C) |
| Lighting | See product line for specific information |
| Bezel | Stainless Steel or Aluminum - see product line for specific information |
| Lens | Glass or Poly carbonate - see product line for specific information |
| Connection | Studs, blade terminals - see product line for specific information |
| Mounting Bracket | Plastic clamp, metal on water pressure. Clamping range 0 -.8" (0-20 mm) |
| Torque | 5 to 7 inch pounds (.57 - .80 Nm) |
| Mounting Hole | 2 1/16" (53 mm) for 2" Instrument |



Made in the USA

Manufactured by Faria Beede Instruments, Inc , North Stonington CT, USA • Copyright and all other rights reserved.
Our products are continually being improved. Specifications may change without notice.



Faria Beede Instruments, Inc.

North Stonington, CT 06359

860.848.9271

Fax: 860.848.2704

fm-002-0001 rev O 200102